

'89 MAY 15 AM 10 26

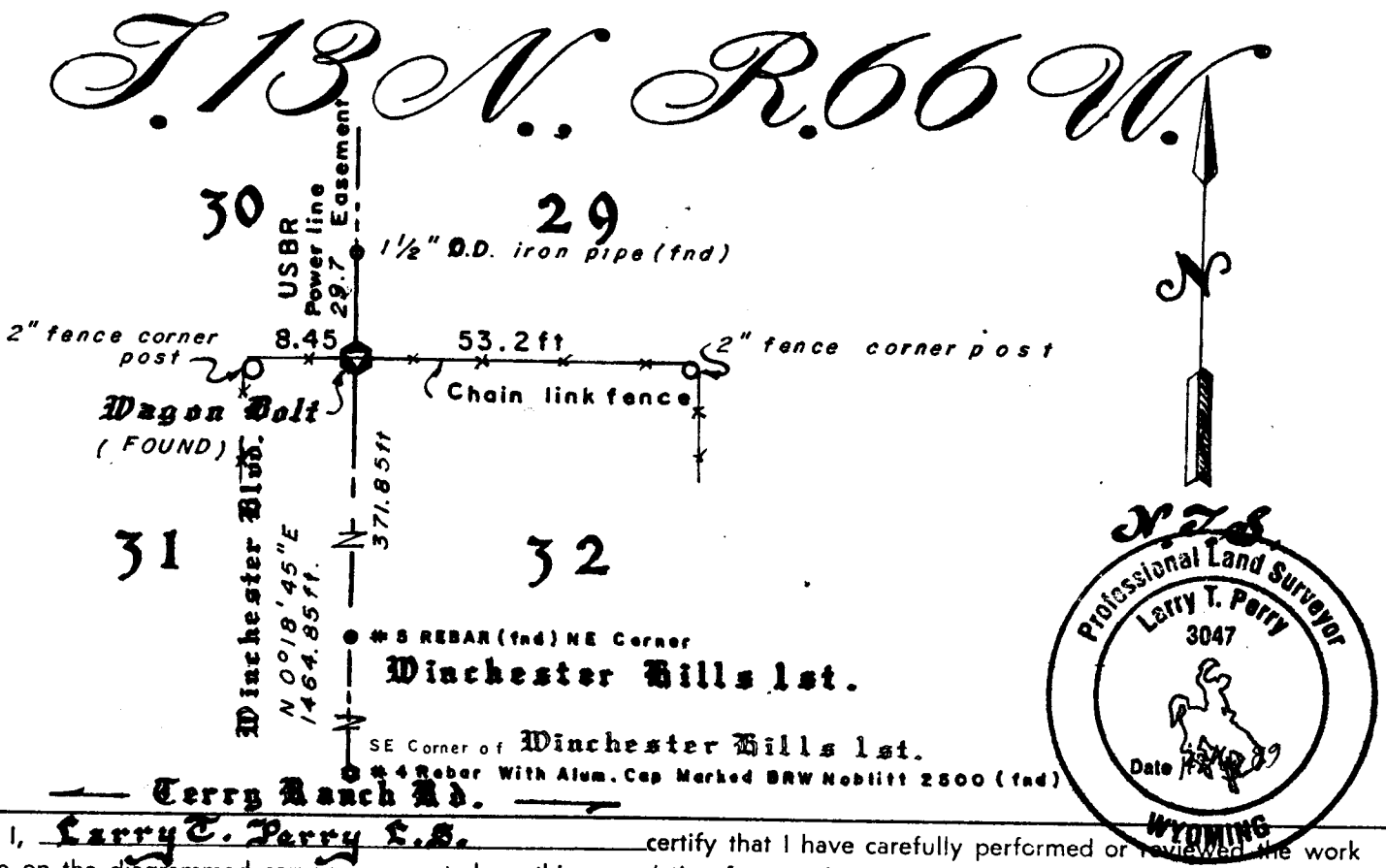
CERTIFIED LAND CORNER RECORDATION

30|29 DESCRIPTION OF CORNER EVIDENCE FOUND, AND ORIGINAL RECORD (If known)  
31|32 GLO Aug.1870 calls for 16X8X8 granite boulder. Laramie County Engineer found Wagon Bolt set as section corner Sep.1968 & recorded in the County Engineer's office. Corner proably set by Charles S.Meurer Reg. No. 451 in 1960 when platting Beverly Hills subdivision. Found Wagon Bolt under chain link fence as shown below.

DESCRIPTION OF MONUMENT AND ACCESSORIES ESTABLISHED TO PERPETUATE THE ORIGINAL LOCATION OF THIS CORNER:

Set an iron "T" post painted blue with 29-30-31-32 T13N R66W painted thereon.

SKETCH, WITH COURSE AND DISTANCE TO ADJACENT CORNER IF DETERMINED IN THIS SURVEY. (May Sketch or Paste Reproduction on Reverse Side.)



I, Larry T. Perry L.S. certify that I have carefully performed or reviewed the work done on the diagrammed corner as reported on this recordation form and approve the same.

Larry T. Perry L.S. 3047  
Signature of Surveyor Registration No.

STATE OF WYOMING,  
Office of Clerk and Recorder,  
County of \_\_\_\_\_

This "corner record" was filed for record on the \_\_\_\_\_ day of \_\_\_\_\_, 19\_\_\_\_, was noted on the cross-index plat and is assigned page No. \_\_\_\_\_, In book No. \_\_\_\_\_.

James C. Whitcomb  
County Official

Cross Index No.	<u>V-5</u>	T.	<u>13</u>	R.	<u>66</u>	Mer.
		T.		R.		Mer.
		T.		R.		Mer.
		T.		R.		Mer.
		T.		R.		Mer.
		T.		R.		Mer.
		T.		R.		Mer.

5 ~ V  
BOOK 1273